



***Printed Circuits Professional  
Computer Integrated Manufacturing & Management  
Enterprise Resource Management  
Tools for the Printed Circuit Industry***

Founded in 1992, Softwires is Europe's leading provider of integrated enterprise software solutions specific to the Printed Circuit Industry. Since the launch and introduction of Printed Circuits Professional in 1993, Softwires has been working closely with customers making the transition to the CIMM and ERP Technology business models.

SoftWires' mission is to provide customers with the tools necessary to gain a strategic technological advantage in today's highly competitive market. To integrate and consolidate all departments with one source of information, by increasing productivity, reducing cost of manufacturing, optimise resources, reduce lead-times and most importantly improve customer service response.

The commitment of SoftWires to support its customers comes with developing a partnership and providing professional service. This commitment is extended by continually evolving the SoftWires line of products to meet industry changes and needs. SoftWires pro-actively guide their customers in the directions needed to reach the lowest cost of ownership while attaining the highest level of value.

---

## SALES / CONTACT MANAGEMENT



The Sales & Contact Management modules drive your business prime activities such as customer service, enquiries, quotations, order booking, order tracking and provide timely and accurate information that enables your sales team to concentrate effortlessly on increase sales and customer satisfaction. The main functionalities are as follow:

### Quotation

- Generate quotes based on actual engineering/production route, process and raw material inclusive of overhead and mark-up with the ability to compare with market expectation for a single or multiple manufacturing site
- Calculate cost including over makes based on product complexity, order quantity and historical data
- Provides quote management, reporting and follow-up capabilities
- Convert quote to sales order
- Quote tracking, lost/won/budgetary/pending, expected closeout date.

### Sales Order

- Sales order confirmation
- Stock order / Order shipping validation / Process hold
- Production capacity alert
- Split sales order
- Provides sales order tracking by customer, product, purchase order or works order
- Works order shop floor location reject/defect status

### Sales Performance

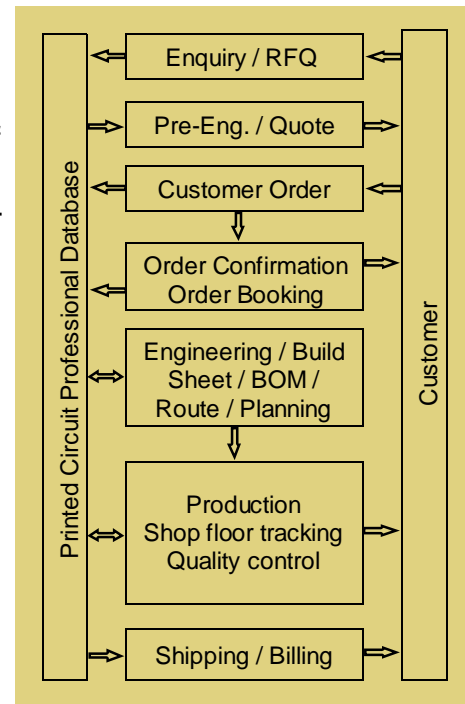
- Sales budget per sales representative and budget allocation per customer
- Sales representative commission
- Tracking of sales performance against budget
- Success rate by sales representative, customer & period

### Sales Reporting / Analysis

- History and Analysis per customer, product, product type, services, account manager, region, customer type. Industry and product technology.
- All reports can be modified/customized using Crystal Report

### Contact Management

- Prospect and customer profile
- Integrated itinerary / calendar
- Automated agenda / appointment / task / communication
- Visit report generation
- Win32 / .NET (Quote, Order booking, Production status, Billing, Budget, Success rate)





## ENGINEERING / PLANNING

Within this key module, engineers can perform front-end-product engineering and generate board construction for any kind of product such as single-sided, double-sided, multi-layer, buried and blind holes, sequential build, flex, flex-rigid and pre-fabricated components as well as component assembly. Generate routes & lay-up based on user defined rules & constraints.

### Product Specification / Validation

- Ability to import full product specification from CAM including circuit shape, customer panel and lay-up
- Manual or automated product validation via import

### Panelisation

- Automated and manual circuit and customer panel lay-up
- Calculate material utilisation, yield/scrap rate

### Construction / Bill of Materials

- Create multi-level construction (sub-constructions and Pre-fabricated components)
- Create BOM for all process route
- Create build sheet (graphical representation)

### Process Route

- Generate process route for every construction, fabricated components and component assembly
- Automatically generate process instructions based on route and product specification
- Allow sub-contracting of processes, inner layers, pre-fabricated components or the entire product
- Ability to modified process routes
- No limit on the number of processes on any routes

### Order Processing / Planning

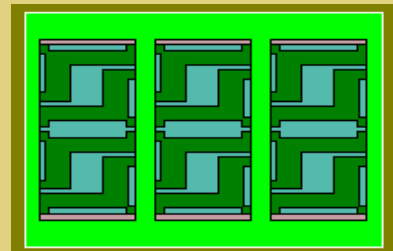
- Automated process capacity alert on processing order when bottle-neck is identified on a given process

### Documents

- Ability to print product specification, process routes, build sheets, bill-of-materials, tooling label, product history, sales orders schedules and work-in-progress

	(1) Copper Foil 12 Microns
	Prepreg 106
	(2) Copper Foil 12 Microns
	2 x Prepreg 106
	(3-4) FR4 0.07mm 18/18
	2 x Prepreg 106
	(5) FR4 0.07mm 18/18
	Prepreg 106
	Prepreg 1080
	(6-7) FR4 0.07mm 18/18
	Prepreg 1080
	Prepreg 106
	(8) FR4 0.07mm 18/18
	2 x Prepreg 106
	(9-10) FR4 0.07mm 18/18
	2 x Prepreg 106
	(11-12) FR4 0.07mm 18/18
	Prepreg 106
	2 x Prepreg 1080
	Prepreg 106
	(13-14) FR4 0.07mm 18/18
	2 x Prepreg 106
	(15-16) FR4 0.07mm 18/18
	2 x Prepreg 106
	(17) FR4 0.07mm 18/18
	Prepreg 106
	Prepreg 1080
	(18-19) FR4 0.07mm 18/18
	Prepreg 1080
	Prepreg 106
	(20) FR4 0.07mm 18/18
	2 x Prepreg 106
	(21-22) FR4 0.07mm 18/18
	2 x Prepreg 106
	(23) Copper Foil 12 Microns
	Prepreg 106
	(24) Copper Foil 12 Microns

*Build Sheet extract*



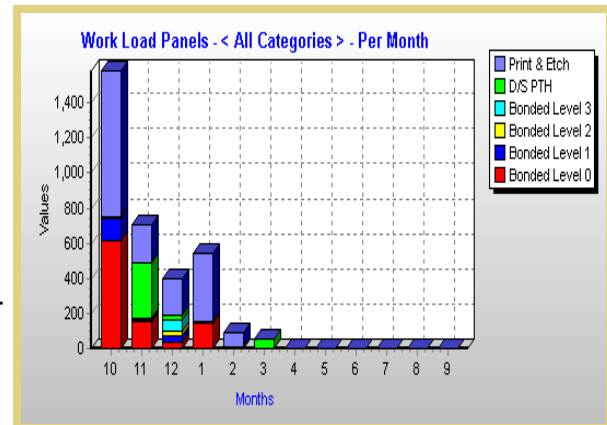
*Automated lay-up*

## PRODUCTION / QUALITY

This module provides an effective way to control the production flow from order processing to shipping with the aid of capacity planning, dynamic scheduling, shop-floor tracking and data collection giving real time visibility on the status of any sales and works order to all sections of your organisation and customers with access permissions.

### Production Control

- Remake/rework full batch, part batch, inner layer constructions, and pre-fabricated components
- Split and merge works-order
- Place a works-order on hold and release from hold
- Attach production notes to works-order, constructions and processes
- Ability to prioritise works-order
- Shipping

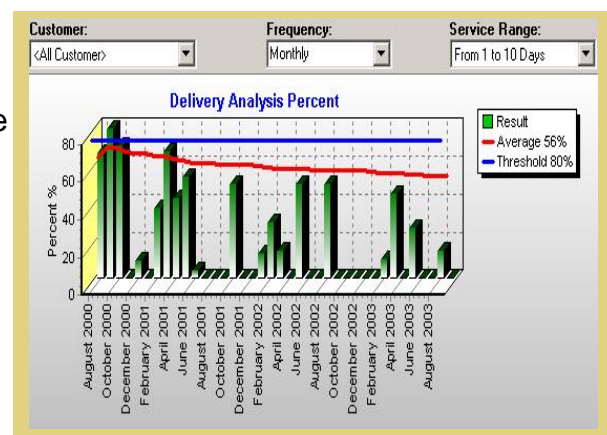


### Shop Floor Tracking and Data Collection

- Real time order tracking
- Add process notes to works-order
- Access to customer, product, construction, process notes and instructions
- Barcode enabled for process scanning and materials
- Operator ability to record rework and quality defect on circuit, customer panel and manufactured panel
- Automated notification when works-order construction gets below required quantity.
- Ability to record product control for quality certification

### Quality Control

- User defined defect, rework code and defect allowance
- Return Material Authorisation (RMA) with the ability to remake, rework and generate corrective action
- Customer request for concession
- Tooling Corrective Action (TCA) with ability to either stop process orders or stop processing passed a selected process
- Process control
- Goods return



### Reporting / Analysis

- Work load analysis by panel, surface area, process and department
- Throughput analysis by process and department
- Work-In-Progress / Work load / Performance per department, process and operator
- Delivery performance

## SYSTEM AND OTHER FEATURES



PCP integrated solution will streamline your business and meet your day-to-day critical needs of managing information throughout your organisation with easy-to-use application interfaces and innovative functionalities. In addition, PCP has been developed specifically for the printed circuit industry keeping in mind its constant evolution and flexible need for integration and scalability.

### System Manager

- Control and grant/restrict access to various parts of the system

### Database Management

- Low cost of ownership and maintenance
- Reliable Client/Server architecture (MS SQL)

### Document Management

- Enable the association of any documents (send or received) with customers, suppliers, products, contacts and employees

### Interface

- Import of product specification from CAM such as Frontline Genesis and Barco
- Export of invoices, customer, supplier information to financial software such as Sage line 50 / 100

### Online access

- With login permissions, customers can check the status of sales orders, delivery and stock availability and more.

### Flexible Reporting

- Over 200 reports are available and can be modified by the user with Crystal Reports
- Ability to create user defined reports.

### Multi-site Management

- The multi-site capability allow the synchronisation and replication of selected information on multiple database across the world through the Internet.
- Enable multi-site costing, order appropriations and inter company transactions with total visibility on all sites.

### Contact Management (Win32) / (.NET application)

- Enable the management of customer communication, appointments and visits
- Generate automated agenda, tasks, visit reports and web reporting
- Sales representatives can print a company current activity/profile/history before a visit

The screenshot displays a software interface for managing visits. On the left, a tree view shows a list of companies, with '2002/08/02 - Format Electronics' selected. The main area is divided into several sections: 'Visit Date' (02/08/2002), 'Visit Completed By' (Roger Delen), 'User Attendees' (Mike Moreton, Patricia Fowler), and 'Company Attendees' (Mr Callum Lewis). Below these are sections for 'Immediate Opportunities' and 'Long Term Opportunities', each with columns for 'Comments', 'Release Date', and checkboxes for 'PCB', 'Assembly', and 'S/Metal'. There are also sections for 'Red Flags', 'Customer Perceptions', 'Actions Rising', and 'Comments'. At the bottom, a 'User Visit List' shows a list of visits with columns for 'Creation Date', 'Created By', 'Action Required', 'Actionee', and 'Completion'. A 'Save All' button is visible in the bottom right corner.